

Using the Bulk Dump Converter

MFC-101 Firmware 1.0 is not compatible with MFC-101 backup files created using earlier firmware.

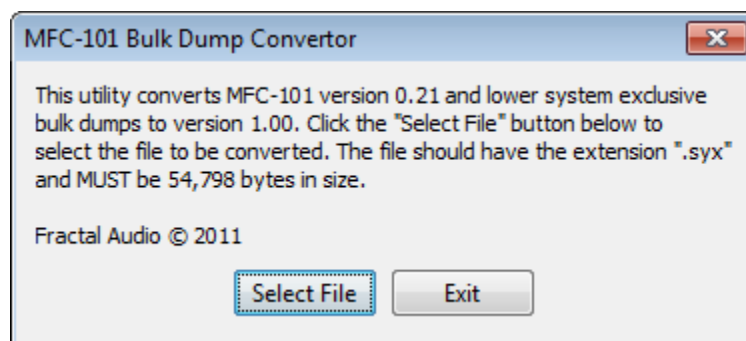
The **MFC-101_BulkDumpConvertor** utility converts older backups for use with the new 1.0 system.

If you want to retain settings after upgrading to 1.0, you must backup prior to installing 1.0.

1. Make a backup of your current MFC-101 Settings using the process outlined in the **SysEx Data Dump/Load** section in the **SETUP MENU REFERENCE** section of the MFC-101 manual.
2. Make sure you have the current version of Java installed and working.

<http://www.java.com/en/download/testjava.jsp>

3. Run the MFC-101 Bulk Dump Converter by double clicking the .jar file



4. Press the Select File button and then browse to and select the backup file you created in step 1. This will create a the .syx file you'll restore from after the update.
5. Update your MFC-101 to the new 1.0 firmware.
6. IMPORTANT: When the firmware upgrade completes, you must perform a Factory Restore by holding the #11 footswitch of the MFC-101 and cycling its power. Press ENTER (#14) to execute.
7. LOAD the file you created in step 4 to the MFC-101 using the process outlined in the **SysEx Data Dump/Load** chart in the **SETUP MENU REFERENCE** section of the MFC-101 manual.
8. Once the LOAD completes, you'll need to check two new settings:
 - a. Press EDIT followed by footswitch #4 MIDI and select the PORT you will be using: MIDI or Expansion (Expansion is available only for Axe-Fx 2. See p.7 and p. 11 of the new MFC-101 manual for details). Press EDIT to save and exit.
 - b. Press EDIT followed by footswitch #5 SETUP and select an Axe-Fx Mode/Model: Standard, Ultra, or Axe-Fx II (or set NONE to turn Axe-Fx mode OFF. Press EDIT to save and exit.